

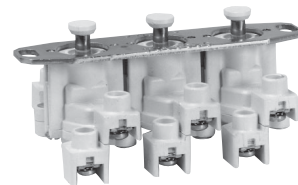
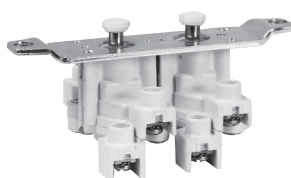
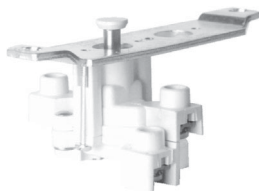
Replacements for Pushbutton and Selector Switch Control Stations

4C

600 VAC Heavy Duty

ED Series Pushbutton Contacts (for control stations built in 1996 or earlier)

Complete with Mounting Strap and Hardware



Where Used

MC pushbutton stations and selector switches
OAC pushbutton stations and selector switches
EWC pushbutton stations
EMP selector switches
DSD962 pushbutton cover

1 Circuit
Universal



Cat. #

ED11

ED21

-

ED38

-

2 Circuits
Universal



Cat. #

ED12†

ED22†

ED32†

-

-

2 Circuits
1 Open - A
1 Closed - B



Cat. #

ED12†

ED22†

ED32†

-

-

3 Circuits
Universal



Cat. #

-

-

-

-

ED13

FlexStation Series Pushbutton Contacts (for control stations built in 1997 or later)

Contact Block without Mounting Strap



Where Used

EDS and EFS pushbutton stations and selector switches
DSD962 pushbutton cover

1 Circuit
Universal



Cat. #

ESWP126

-

2 Circuits
Universal



Cat. #

ESWP126 (2)

-

2 Circuits
1 Open - A
1 Closed - B

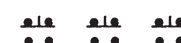


Cat. #

ESWP126 (2)

-

3 Circuits
Universal



Cat. #

-

ESWP126 (3)

Contact Ratings

Volts	Max. Current (Amperes)		Voltamperes		Continuous Current (Amperes)
	Make	Break	Make	Break	
600 VAC Heavy Duty (NEMA A600)					
120	60	6.0	7200	720	10
240	30	3.0	7200	720	10
480	15	1.5	7200	720	10
600	12	1.2	7200	720	10
Direct Current (NEMA P150)					
125	1.1	1.1	138	138	5

External Operating Buttons



CF859



CF705

Where Used

MC, EFS, and EFD – current design with nylon guards

Colors Available

Red, Green, Black

Cat.

CF859 K1 ①

EMPS019, EMP019, EMPS029 and EMP029 – single operator FS, EFS, and EFD – previous design with aluminum guards

Red, Green, Black

CF705-K1 ①

① If desired, markings on indicating plates may be added to catalog number. Select from the list of standard markings below:

START	OFF	RESET	LIGHT ON
STOP	RUN	TRIP	HAND
ON	JOG	TEST	AUTOMATIC

EMERGENCY	OPEN	DOWN	RAISE
FORWARD	CLOSE	IN	LOWER
REVERSE	UP	OUT	

Note: CF859-K1 and CF705-K1 come with 5 buttons.

† Two universal contact blocks, must be wired as two circuits, with one normally open and one normally closed.

‡ Use CF705-K1 for DEV11 and DEV12. To order DL legend plates see page 516 for markings.

Crouse-Hinds

by **E•T•N**

www.crouse-hinds.com US: 1-866-764-5454 CAN: 1-800-265-0502 Copyright© 2013 Eaton's Crouse-Hinds Business

571